

Tropical butterfly and flower

You will need:

Round brush nr. 2
Aquarelle water paint (Winsor & Newton)
PCA diagonal grid (fine)
Embossing mat
Perforating mat
Pointed scissors ring lock or perga cutter
White pencil
Glue or glue dots
Tear-off palette
Cardboard sheet
Ruler
Craft knife
Paper tissues

TRACING: With white pencil-the whole design

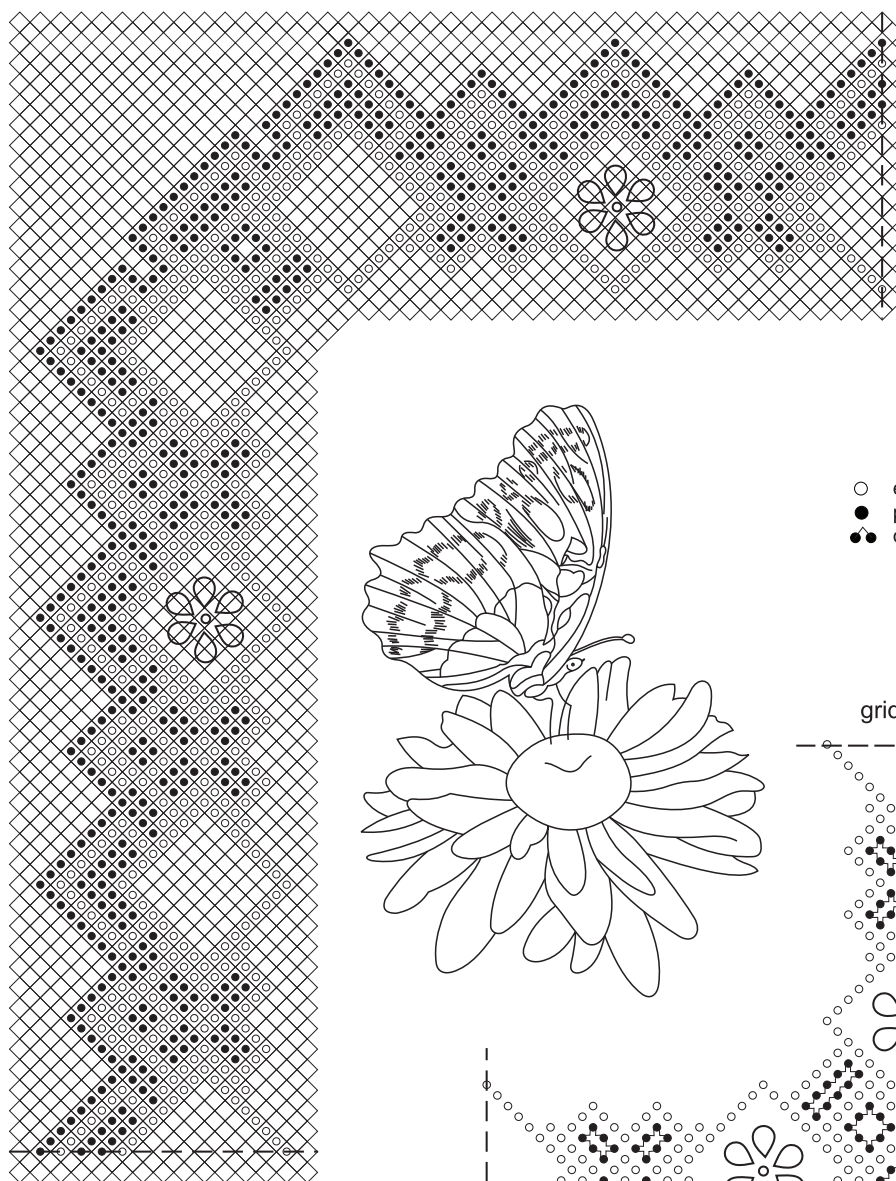
PAINTING: Wet technique: With aquarelle water paint using round brush no. 2 (refer to coloured photo)

BORDER: Embossing and perforating on PCA diagonal grid with embossing tool extra small ball.

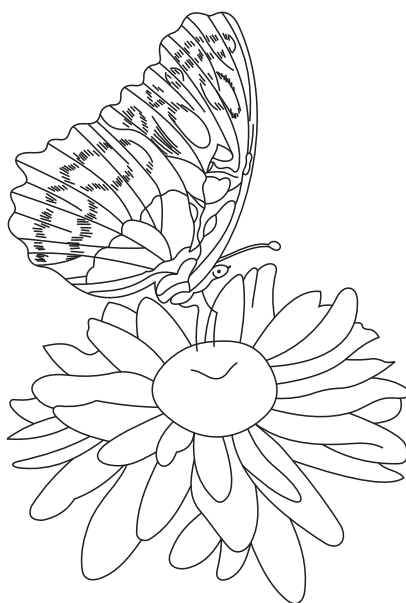
CUTTING: Cut out grid perforations (see illustration)

FINISHING: Cut out front sheet along the grid perforations. Cut the card made of green card stock to size. Attach the front sheet to the green card with glue or glue dots.

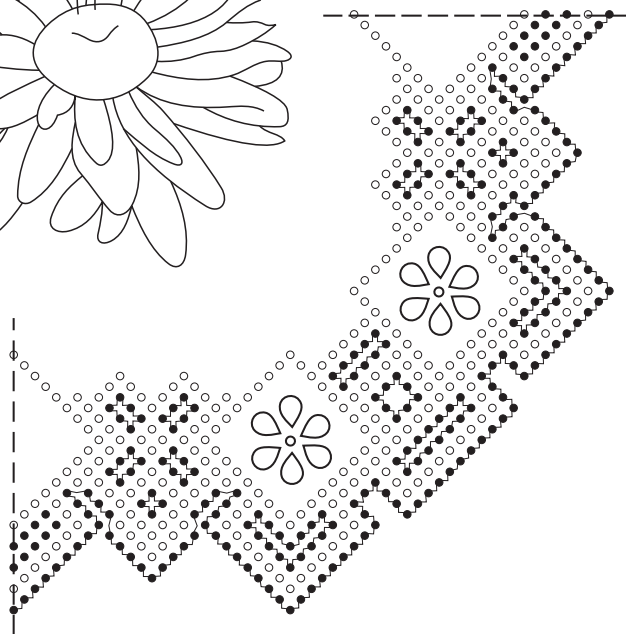
Free Pattern



- emboss
- perforate
- cut



grid cut pattern



Designed by Ria van der Ploeg

Designer: Best of the Best Parchment Craft, A Classic Collection 1